



CAMERON PASHAK

A Multidisciplinary Creative

CAMERON PASHAK

A Multidisciplinary Creative

Art Direction / Photographer / Video / Marketing Strategy

L I F E S T Y L E

Photography, Marketing, and Art Direction

Psycho Tuna

Photography





We are a global lifestyle brand that celebrates the experience of a life well lived with garments made from sustainably-sourced materials. Psycho Tuna provides stylish comfort, premium quality, and a modern dedication to the responsibility of Mother Nature.

SURF EXPO JANUARY 6-8, 2021
ORLANDO, FLORIDA

WE ARE EXCITED TO BE EXHIBITING AT THE SURF EXPO TRADE SHOW BOOTH #445

**JANUARY 6-8, 2021
ORLANDO, FLORIDA**

It's been a minute since we've been able to meet in-person, but this year, Psycho Tuna is exhibiting at the Surf Expo in Orlando, Florida.

We want to connect with our network, and learn with our existing and new customers safety, and that's why safety protocols have been put in place.

Do you want to schedule a meeting with us at our show?

[REQUEST TO ATTEND](#)

Psycho Tuna

Photography / Art Direction / email marketing



2021 LOOKBOOK

Download our 2021 Lookbook

[DOWNLOAD HERE](#)

CAN'T MAKE THE SHOW?

If you cannot attend the SURF EXPO SHOW in ORLANDO, CONTACT us below, and we can arrange a Zoom meeting to present our Collections.

[CONTACT US](#)



CONTACT ADDRESS

7800 Airport Business
Parkway Studio B
Van Nuys, CA 91406 USA

PHONE AND EMAIL

Rick Garcia
Sales Executive
862-827-8719
rick@psycho tuna.com



www.psycho tuna.com

Email Marketing Services By





GUCCI

DR. GRUNING
Photography & Instore POS Art Direction

Tinsel Korey

Photography & Celebrity Editorial Art Direction





ELYSE LEVESQUE

Photography & Celebrity Editorial Art Direction

MAUI AND SONS

Lookbook/Online Store Product Photography





MY ACCOUNT SHOPPING BAG: (0) ITEMS

Search Maui

CLOTHING ACCESSORIES SKATE SHOP SALE ITEMS BLOG



NEW Arrivals

SALE



VISIT THE SKATE SHOP

MAUI & SONS

enter email address & win a Tshirt



Like us on Facebook and Win some cool stuff

Customer Service
310.392.MAUI (6284)

[Customer Service>Returns](#) | [Contact](#) | [Privacy and Security](#) | [Terms of Use](#)

© 2007-2012 MauiAndSonsRetail.com

MAUI AND SONS

Product and Editorial Photography / Online Store Design Development / Brand Management / Social Media/Influencer Collaboration




MAUI and Sons

MAUI and Sons



MAUI AND SONS

Photography / Art Direction



MAUI AND SONS

Photography / Billboard / Brand Management

MAUI AND SONS

Photography / Art Direction / Magazine Ad

MAUI and Sons



ENDLESS SUMMERS SINCE 1980

FIND A RETAILER OR SHOP ONLINE AT
WWW.MAUIANDSONS.COM

MAUI and Sons



ENDLESS SUMMERS SINCE 1980

FIND A RETAILER OR SHOP ONLINE AT
WWW.MAUIANDSONS.COM



FREE HOLIDAY SHIPPING

24 hours left to shop

(last day to shop before Christmas is Tuesday December 18th)



DARREN PLAID FLANNEL SHIRT - Blue or Off-White

\$49.50 [BUY NOW](#)

with free shipping



DAYBREAK PUFFY REVERSIBLE VEST

\$45.00 [BUY NOW](#)

with free shipping

www.mauiandsons.com



MAUI AND SONS

Photography / Art Direction / Email Marketing / Online Store APP Management



MAUI AND SONS

Photography/Art Direction / In-store Point of Sale/ Brand Management



ANIMAL HOUSE

Art Direction & Photography



ANIMAL HOUSE

Art Direction & Photography



LONGMATE

Photography/Art Direction



LONGMATE

Art Direction / Photography



LONGMATE

Art Direction / Online Store Devopment / Photography / Marketing





graham
wardle
/actor
/canada

sweater - Cottonfield
shirt - Relwen
sean - J Brand
soat shoe - Yuketen

BULLET

Editorial Art Direction / Photography



ARITZIA

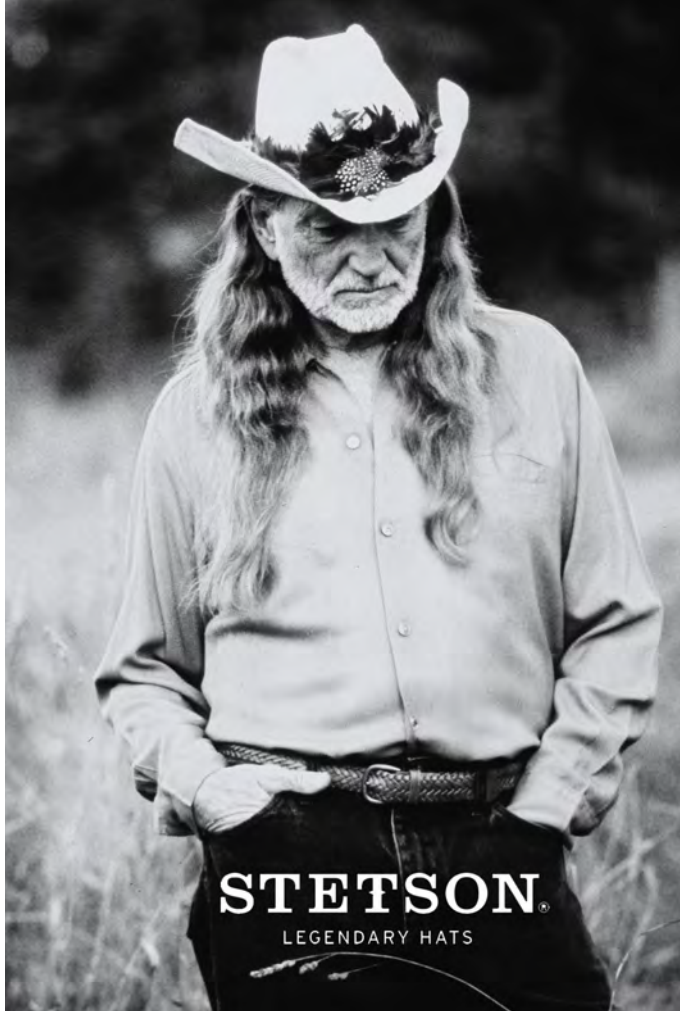
Pitch Decks & Booklets - USA Store Roll-Out - Art Direction / Photography



ARITZIA

Pitch Decks & Booklets - USA Store Roll-Out - Art Direction / Photography





STETSON

Celebrity Photography & Art Direction

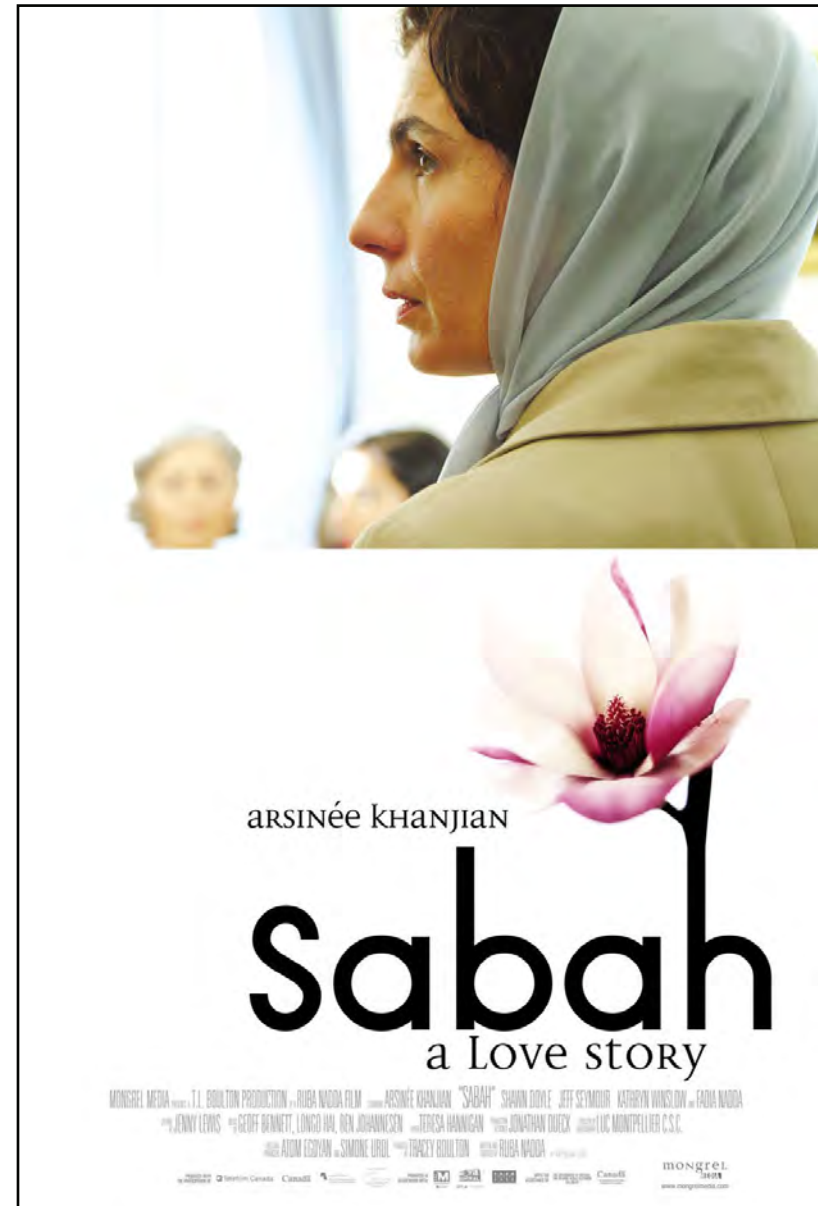


AVENUE MAGAZINE

Fashion Editorial Layout & Celebrity Photography

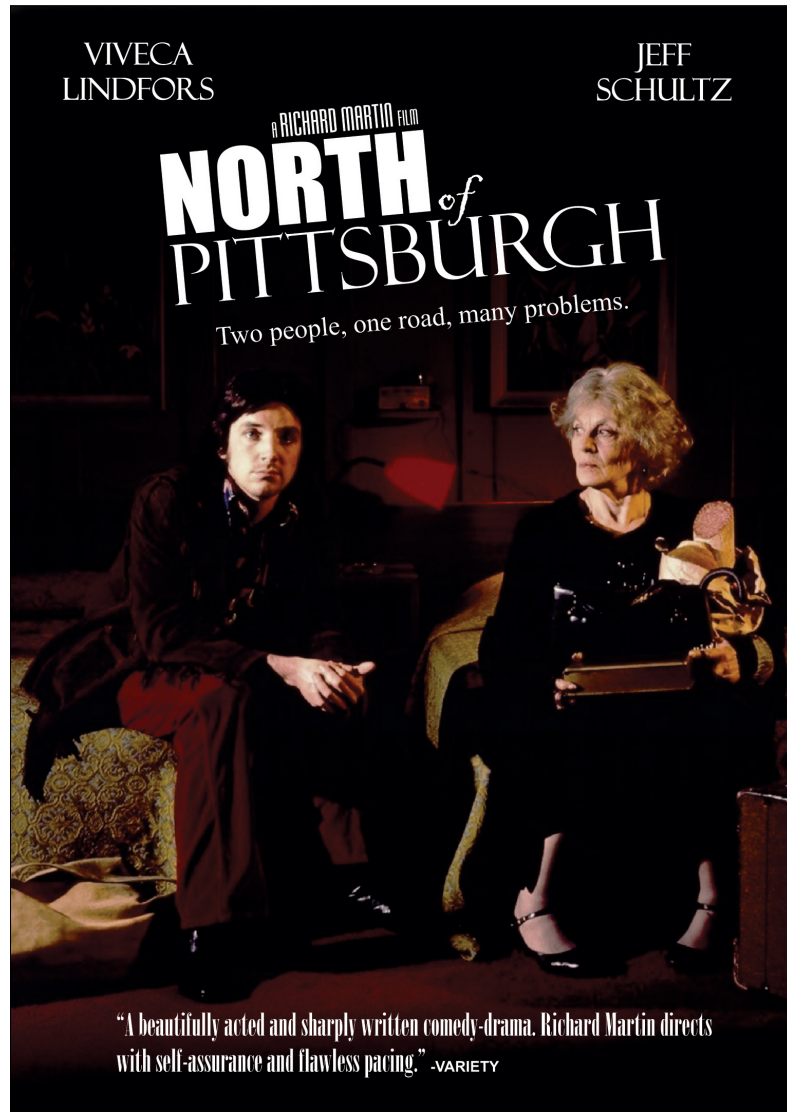
FILM

Art Direction / Poster Design / Photography



FILM

Art Direction / Poster Design / Photography



MUSIC

Art Direction / Poster Design / Photography

R & B • JAZZ • MOTOWN • BIG BAND SWING

THURSDAY JULY 11TH
FRIDAY JULY 12TH

barry minniefield
FROM THE VOICE

LIVE ON THE PATIO
HENRY'S
OCEAN VIEW DINING

6PM -10PM

THE WATERFRONT BEACH RESORT, A HILTON HOTEL
21100 PACIFIC COAST HIGHWAY, HUNTINGTON BEACH, CA 92648 USA

the Voice

Thank-You For All
Your Support!

Barry Minniefield

www.barryminniefieldofficial.com

@MusicByBarry

NBC

VIDEO

Video, Drone and Editing (click on play button)



01:34

ROF-Wetlands



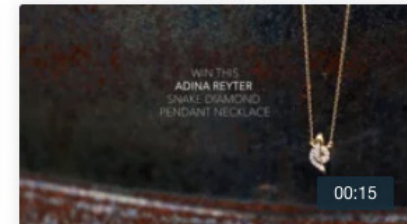
00:15

Blue Ruby - Wolfe Circus



00:15

Blue Ruby - Scosha



00:15

Blue Ruby - Adina Reyter



00:15

Blue Ruby - Lulu Designs



01:00

Blue Ruby Cause We Care



01:01

Jacob - Under Armour



00:47

Happy Fourth From Longmate



HOSPITALITY, FOOD & BEVERAGE

Photography, Marketing, and Art Direction



TREK

Concept Strategy / Art Direction / Photography



TRUE BLUE

Truck Wrap Art Direction / Photography

BARNEYS NEW YORK WAREHOUSE THE WINDOW

THE WINDOW INSIDER FASHION ACCESS

FASHION BEAUTY HOME BARNEYS MAN PERSONALITIES HAPPENINGS CITY GUIDE SHOP

City Guide
Los Angeles HOLLYWOOD

CITIES PERSONALITIES CATEGORIES

Carisa Janes's City Guide BACK TO GUIDE

JAMES' BEACH



Photographed by Cameron Pashak



ADDRESS
60 N Venice Blvd, Venice, CA 90291

With a location only a half block away from Venice Beach, James' Beach is a neighborhood favorite for great food and drinks.

CONTACT
310.823.5396
<http://www.jamesbeach.com/>



BARNEYS NEW YORK

The Window Online Magazine - Editorial Photography



SECTION (3) RESTAURANT

Photography / Website Design / Email Marketing Campaigns



Section (3)
www.sectionthree.com

Reserve A Table
Online

Visit Our Website

[Dinner Menu](#)
(new)

[Quickie Lunch Menu](#)

[Reservations](#)



Dear Sall,

CANCELLATION OF OPEN TABLE

You are receiving this email as you have booked an online reservation with us in the past using Open Table. As of March 1st, we have stopped using the Open Table system and have implemented our own online reservation system.

Although the Open Table system has some great features, we were not able to use the many promotional features within our current customer engagement, offers and promotions within that system.

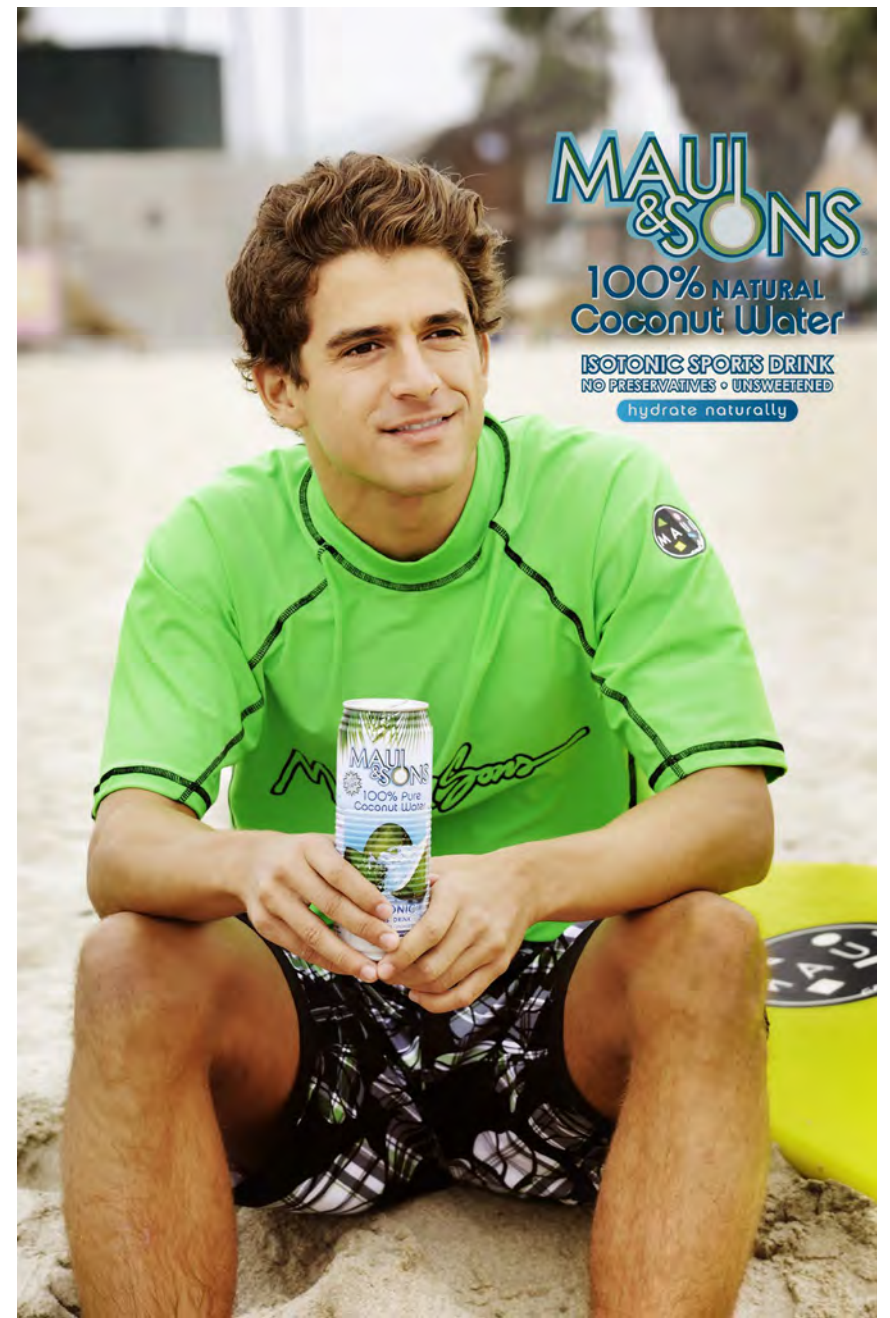
We know that this is inconvenience for some people who rely on the Open Table system so we have a discount card below as a thank-you for adjusting to our new online reservation system.

The card below is good for 10% off your bill for any reservation up to 4 people made online at www.sectionthree.com until May 31, 2011. As a VIP Reservation member, you will also receive other discounts through out the year not available to anyone else.

Please note: Please DO NOT share this on your facebook, twitter or with your friends. Each VIP card has your name on it and a user number that must match our records.

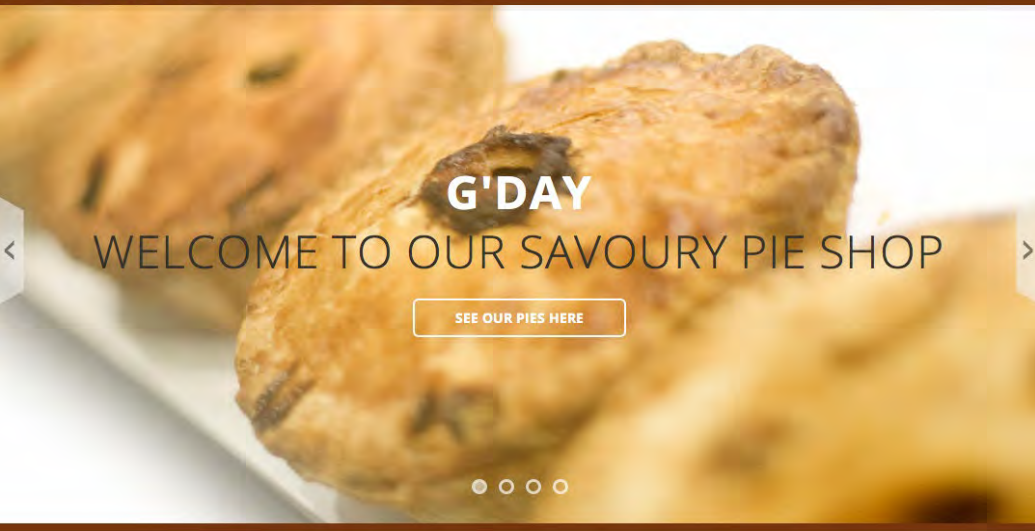
Sincerely,
Sall Pateman
Section (3)
604-684-2777





MAUI AND SONS Coconut Water

Photography/Art Direction / In-store Point of Sale/ Brand Management



WELCOME

From Down Under to You!

Pies are an icon in Australia and are enjoyed by people from all walks of life and all ages. We're introducing a new level of quick-service, eat-in-your-hand, no fuss, affordable gourmet food. Another little known secret about Australia is our love for quality espresso coffee. Bronzed Aussie has an espresso bar serving the finest quality beans supplied by Longshot Coffee.

BRONZED AUSSIE

Photography / Art Direction / Website / Print





PEZ Juice Beverages

Art Direction / Package & Sell Sheet Design / Photography



LEADING BRANDS

Art Direction / Photography

P R O D U C T

Photography, Marketing, and Art Direction

AFFORDABLE GEMSTONES AND PRECIOUS THINGS



Amongst the jewellery displays within a charming old-time family department store in the main street of Kerrisdale Village in Vancouver, B.C., Blue Ruby we have a vintage and precious, the neighborhood of Vancouver recall jewelry store strongly design, her a jewelry and accessories vintage store and Nancy Hill.

Following the success of jewelry and accessory sales within the family owned and operated clothing store, Hills of Kerrisdale, and the look shared in the Vancouver area of venues for high-end vintage jewelry. Blue and Nancy created Blue Ruby jewelry store, offering the vintage and accessories collection of clothing, along with the look shared in the Vancouver area of venues for high-end vintage jewelry. Blue and Nancy created Blue Ruby jewelry store, offering the vintage and accessories collection of clothing, along with the look shared in the Vancouver area of venues for high-end vintage jewelry.

Blue and Nancy created Blue Ruby jewelry store, offering the vintage and accessories collection of clothing, along with the look shared in the Vancouver area of venues for high-end vintage jewelry. Blue and Nancy created Blue Ruby jewelry store, offering the vintage and accessories collection of clothing, along with the look shared in the Vancouver area of venues for high-end vintage jewelry.

land and mineral resources celebrates the Johna Shoppers, Hills of Kerrisdale and Nancy Hill, all of them through the jewelry store in town-wide. There is no such thing as a blue ruby, but with this market implying something unusual, fun, and a sense of "wow" to bring customers back, jewelry and fun, then creating the Blue Ruby store, offering the vintage and accessories collection of clothing, along with the look shared in the Vancouver area of venues for high-end vintage jewelry. Blue and Nancy created Blue Ruby jewelry store, offering the vintage and accessories collection of clothing, along with the look shared in the Vancouver area of venues for high-end vintage jewelry.



Blue Ruby jewelry store, offering the vintage and accessories collection of clothing, along with the look shared in the Vancouver area of venues for high-end vintage jewelry. Blue and Nancy created Blue Ruby jewelry store, offering the vintage and accessories collection of clothing, along with the look shared in the Vancouver area of venues for high-end vintage jewelry.

BLUE RUBY

Editorial Layout & Photography

BLUE RUBY

Photography / Instore Graphics Website / Email Marketing





DR. GRUNING
EYECARE

1312 Montana Ave
Santa Monica, CA 90403
310.576.9191

DR. GRUNING
Photography & Art Direction



THE ALIFE
INC.

RIFT
ALIFE INDEPENDENT FOOTWEAR



ronelo_white



ronhi_white

BECAUSE SOME OF YOU LIKE YOUR SHIT A LITTLE PUFFIER, WE TOOK A GOOD THING AND GAVE IT A FEW EXTRA GRAMS OF THE WHITE STUFF ON THE INSIDE. THE RESULT:

THE "RONE" SERIES

- EXTRA DURABLE ACTION LEATHER AND SUEDE
 - BREATHABLE MESH FLANKS
- BREATH ROUGH "NO-LOGO" UPPER DESIGN
 - OVERSTUFFED TONGUE AND COLLAR
- BRAND DETAIL IF YOU LOOK CLOSELY
- UPGRADED INSOLE FOR ADDED COMFORT

ALIFE/RIFT

Lookbook / Product Photography / Art Direction

LDC Design Studio

Art Direction / Photography



SILVER SEASONS by Michael Michaud

Photography & PR/Editorial



Ben Amun

Photography & PR/Editorial



E - M A I L M A R K E T I N G

P h o t o g r a p h y , M a r k e t i n g , a n d A r t D i r e c t i o n



RESIDENTIAL DESIGN

Dear Candace,
I am extremely pleased to present our new website. You will find below a brief overview of one of our residential design projects we have completed or you can explore deeper into our process, past projects and services with the links above that will take you directly to our website.



COLETTA
Residential Design

This was one of Candace Allen Design Studio's first full scale projects. We were tasked to fit an African Trophy Hunter's thirteen piece taxidermy collection into a 2,400 square foot condo. This remodel included the redesigning of finishes throughout the home, designing a custom book shelf for behind the Milo Baughman desk, and sourcing the stunning, cascading light fixture hanging from the second floor to the first floor bar.



[Check out the full project here](#)

Thank-You,
Candace

Candace Allen | ca@candaceallen.com | www.candaceallen.com

"Candace is an asset in any work environment. She has a strong work ethic, she is creative, energetic and a team player in every sense of the word. I have recommended her for multiple jobs since UCLA." - Rachel E. Interior - Designer at AC Martin



Hello Liliana ,
We want to thank-you for stopping by our booth at the festival last weekend. I hope you enjoyed sampling our Pulled Pork sandwiches. We have included the recipe below as well as a coupon for \$2 off your next Del Real Foods purchase.

**Pulled Pork
Chipotle BBQ
Sandwiches**

Serves 12 portions
Ingredients:

- 2/3- Cup vegetable oil
- 1/3- Cup seasoned rice vinegar
- 1- Teaspoon salt
- 1/2- Teaspoon each: ground black pepper and celery seed
- 3- Cups each: shredded red and white cabbage
- 1 1/2- Cups barbecue sauce
- 1- Teaspoon chipotle with adobe sauce, pureed
- 1- 32oz package Del Real Foods® Carnitas, pulled apart into shreds 1
- 2- Large French rolls, toasted



Product Needed
for this Recipe



Click on the product
to find out more

[click here for instructions for recipe](#)

it's about to get Real



EXPIRES DECEMBER 2013
CLICK TO DOWNLOAD

[Forward this email](#)

SafeUnsubscribe

Trusted Email from
Constant Contact
By a FREE today.

EMAIL

Email Campaigns



SALE BRANDS CLOTHING FOOTWEAR ACCESSORIES

ALL WEEK
**Boxing
Week**
20-70% OFF
In Store & Online
(exclusions may apply)

[SHOP ONLINE](#)

SALE

SALE



LOCATIONS & HOURS
KITSLAND
SOUTH GRANVILLE
PARK ROYAL, WEST VANCOUVER
HILLS OF KERRISDALE
BLUE RUBY
RAY RICKELFIN

www.hillsdrygoods.com

© 2020 Hill's Dry Goods . All Rights Reserved. Terms & Conditions |
Unsubscribe





www.jimmyzworld.com

visit us at

SURF
EXPO

Orlando, Florida Jan 10 - 12
Booth # 824

[add to your walking plan? - click here](#)

JIMMY'Z at SURF expo Jan 10-12 in Orlando, Florida

JIMMY'Z will have a booth at the SURF expo in Orlando, Florida starting Thursday, January 10-12. Come by and check out the collection.

We will be set-up at Booth #824 - [click here](#) to add to your walking plan or for a map of our booth location.

www.jimmyzworld.com



JIMMY'Z

Photography/Art Direction / email marketing



www.jimmyzworld.com

visit us at

PROJECT

Las Vegas NV Aug 20 - 22
Booth #17033



JIMMY'Z at PROJECT

Once again, JIMMY'Z will have a booth at PROJECT in Las Vegas, Aug 20-22. Come by and check out the collection for Spring 2013. Drop by and meet Jim Ganzer along with the rest of Jimmy'z team over the three day event.

We will be set-up at Booth #17033

www.jimmyzworld.com

JIMMY'Z in American Airlines AMERICAN WAY

Check out this article in American Airlines magazine on Jim Ganzer's transition from a "tennis-shoeing" surfer into the fashion business in the early 80's. [read more ...](#)



TADASHI SHOJI

Black Friday - Art Direction / Email Campaign Creation (Email Marketing Award)

TADASHI SHOJI
NEW ARRIVALS EVENING SHOP WEDDING PLUS SIZE ACCESSORIES

First in,
Best
Dressed.

Enjoy 40% off*

Newly Added Styles Exclusively Online
Now through Cyber Monday, Dec. 2nd

[Shop Now ▶](#)

FREE GROUND SHIPPING on all orders delivered within the US*

f t i

This banner features a black background with white text. The headline 'First in, Best Dressed.' is in a large, elegant serif font. Below it, 'Enjoy 40% off*' is written in a red, cursive script. The promotional text and 'Shop Now' button are in a smaller white font. The top navigation bar and footer are also in white.

TADASHI SHOJI
NEW ARRIVALS EVENING SHOP WEDDING PLUS SIZE ACCESSORIES

One Day
Left

Dressed.

Enjoy 40% off*

Newly Added Styles Exclusively Online
Now through Cyber Monday, Dec. 2nd

[Shop Now ▶](#)

FREE GROUND SHIPPING on all orders delivered within the US*

f t i

This banner is identical to the first one but includes a red diagonal banner across the top half that reads 'One Day Left' in white, serif font. The word 'Dressed.' is partially obscured by the red banner.

TADASHI SHOJI
NEW ARRIVALS EVENING SHOP WEDDING PLUS SIZE ACCESSORIES

Last Day

Enjoy 40% off*

Newly Added Styles Exclusively Online
Now through Cyber Monday, Dec. 2nd

[Shop Now ▶](#)

FREE GROUND SHIPPING on all orders delivered within the US*

f t i

This banner is identical to the first one but includes a red diagonal banner across the top half that reads 'Last Day' in white, serif font. The word 'Dressed.' is completely obscured by the red banner.

C O R P O R A T E & I N D U S T R I A L

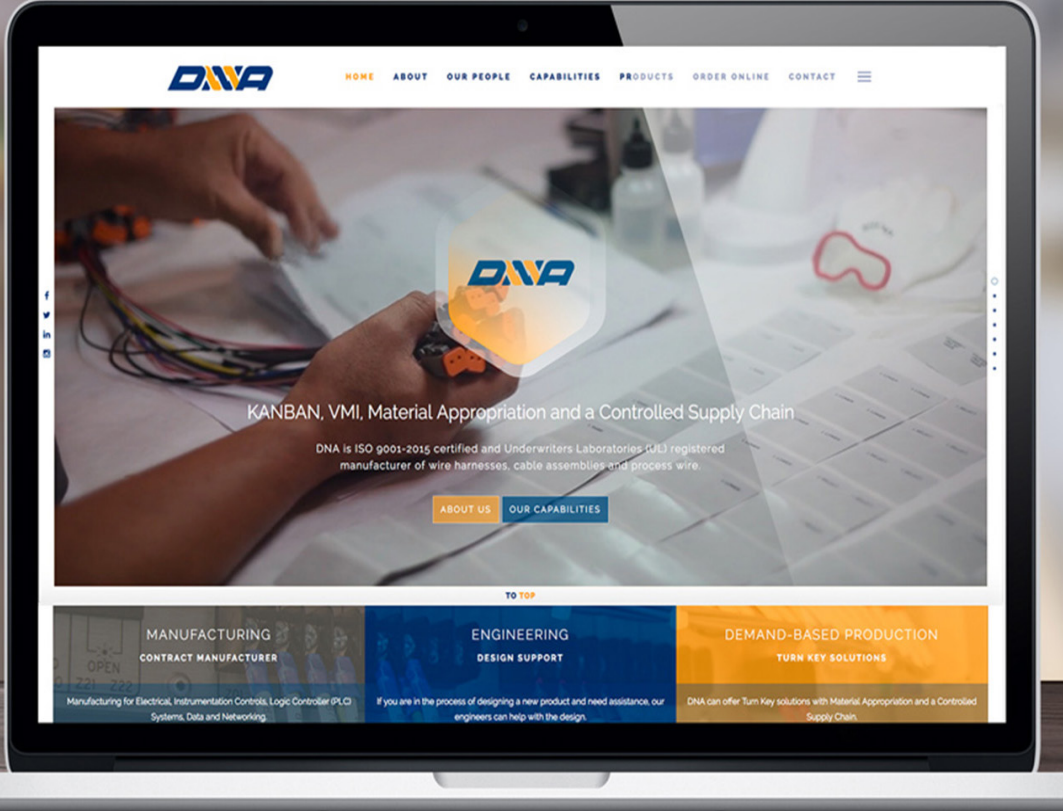
Photography, Marketing, and Art Direction



DNA

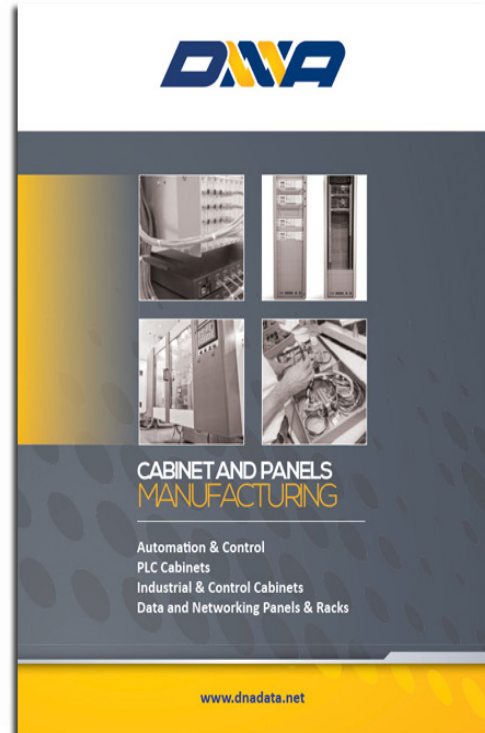
Photography, Business Cards and Catalog Design





DNA

Website, Corporate Profile and Trade Show Design



YOUR CUSTOM BUILDS

We have an extensive database of cabinet, cable, and harness configurations that provide numerous panels for all major communication standards and manufacturers. If you are in the process of designing a new product and need assistance with your custom build, our engineers can help with the design.

- Cabinet 400 panels
- Control Panels
- Control Racks
- Data Backs and Panels
- General purpose panels
- Heat Sinking connector panels
- High voltage switching panels
- MILC cover panels
- Junction Boxes Lighting connector panels
- Mounting panels
- Nonconductive hazardous location panels
- Nylon fiber frames
- PLC/DC cabinets
- Power distribution panels
- Relay panels
- RTU panels
- SCADA panels
- Terminal junction boxes
- UPS control panels
- VFD packages and control integration

OUR MANUFACTURING EXPERTISE

DNA is dedicated to providing a full range of services, building and providing control and control for Industrial for Electrical and Instrumentation Controls, Industrial Control Automation, Process Control, Programmable Logic Controller (PLC) Systems, Industrial & Data and Networking panels and Racks. DNA can integrate with an end party hardware and needs with industry leaders like, Allen Bradley, Siemens, ABB, GE, Delta and other process automation companies. We offer experienced engineering in panel application like, Diffuse, Pipeline, Breweries, Food, Pharmaceutical and Consumer solutions around North America. DNA can offer turn key solutions with Material Appropriation and a Controlled Supply Chain. DNA's ability to meet its customer's schedule consistently along with its commitment to Quality makes DNA a great partner for your next project. We offer experienced engineering in panel:

ENGINEERING MANUFACTURING

DNA's addition of the clean room supports our customers and will allow DNA to support R&D testing and new customers with a wider range of services, as well as offering customers a more complete end to end solution and manufacturing process.

To offer more value and services to our clients who require a clean room environment for their manufactured products and to meet the requirements of our control customers, we currently have a Class 10,000 (Grade 3) and ISO Class 7 clean room that is capable to meet or over 400 square feet of production and manufacturing.

The addition of the Class 10,000 clean room at DNA also enables us to support packaging of materials that need clean room environment whether at the Manufacturing or Shipping end!

CLEAN ROOM MANUFACTURING

DNA products are integrated into high technology products and systems around the world. Field failures are NOT acceptable. Wiring is 100% tested prior to panel build.

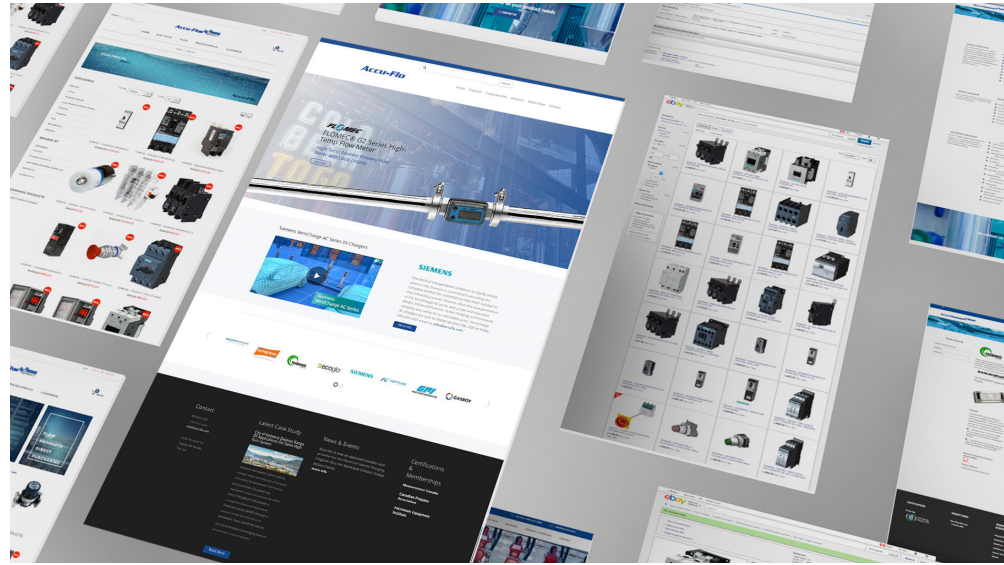
Quality the first time and every time is our measure of success!

QUALITY CONTROL

Our Quality System guarantees that we have a consistent and efficient quality needs. We place great importance on delivery and customer meeting these needs for each part at the beginning of a project to reduce the errors and rework associated with our production and delivery.

ACCUFLO

Photography, Website and Email Marketing



Accu-Flo

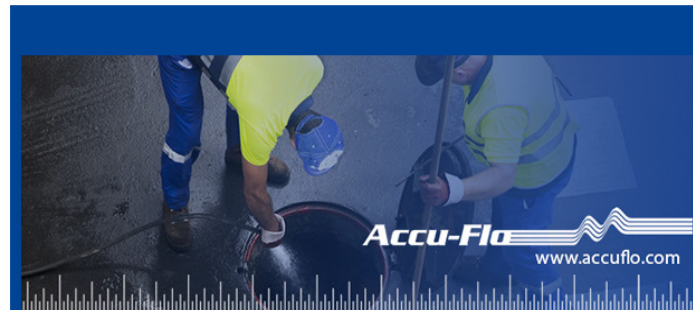
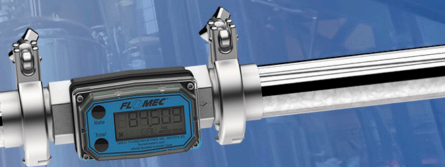
Home Products Corporate Info Divisions What's New Contact

FLMEC

**FLOMEC® G2 Series
High-Temp Flow
Meter**

High-Temp Sanitary Brewery
Flow Meter with Local Display

Buy Now



SMARTCOVER SYSTEMS
TURNING YOUR DATA INTO DECISIONS™

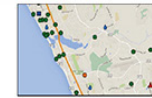
SmartCover® Systems™ offers a range of monitoring and data solutions that provides true visibility of remote sites. Users gain valuable insight into their system's behavior enabling better operational and capital decisions.

SmartCover® Monitors are self-contained, turn-key solutions with a control, sensor, battery pack, antenna and housing. They are specifically designed for ongoing operations in harsh environments such as wastewater. The combination of two-year-plus battery packs and the exceptionally reliable lithium Satellite System assures continuous operation and connectivity when most needed during the worst weather conditions.



Data Streams and Integration

Users have 24/7 access to a variety of data types through the cloud including: level, flow, rain and tides. These can be viewed in a single graph yielding a comprehensive profile of asset performance including collection systems, storm water systems, combined sewer systems, canal systems, rain fields and much more. Moreover, the trend change analysis tool, SmartTrend™, enables predictive trend change detection transforming operations and maintenance tasks from reactive to a pro-active response.



System-Wide Map



Integrated Data Viewing

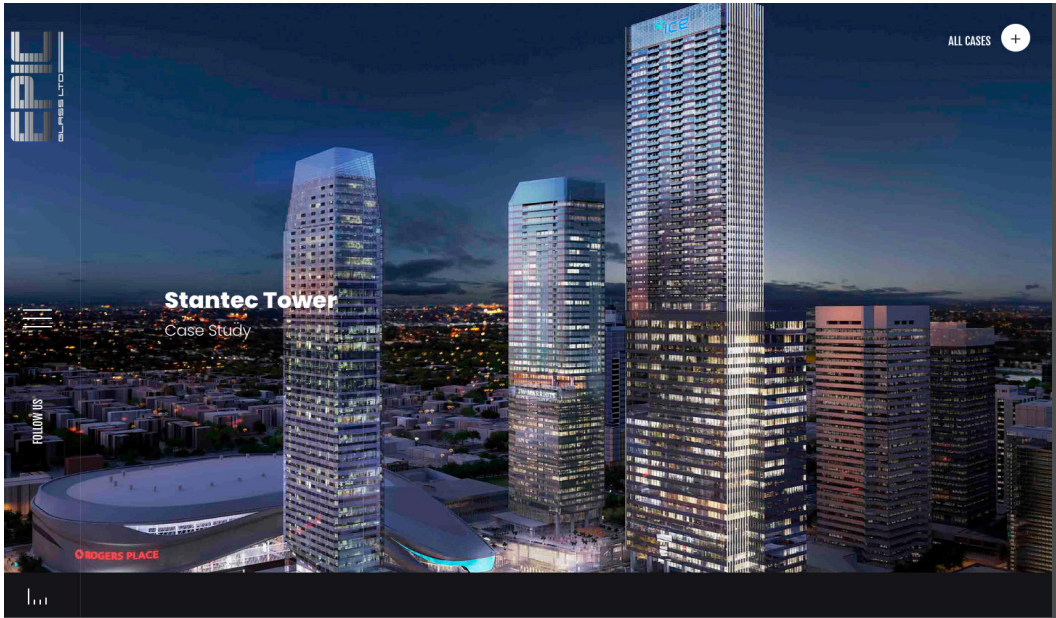
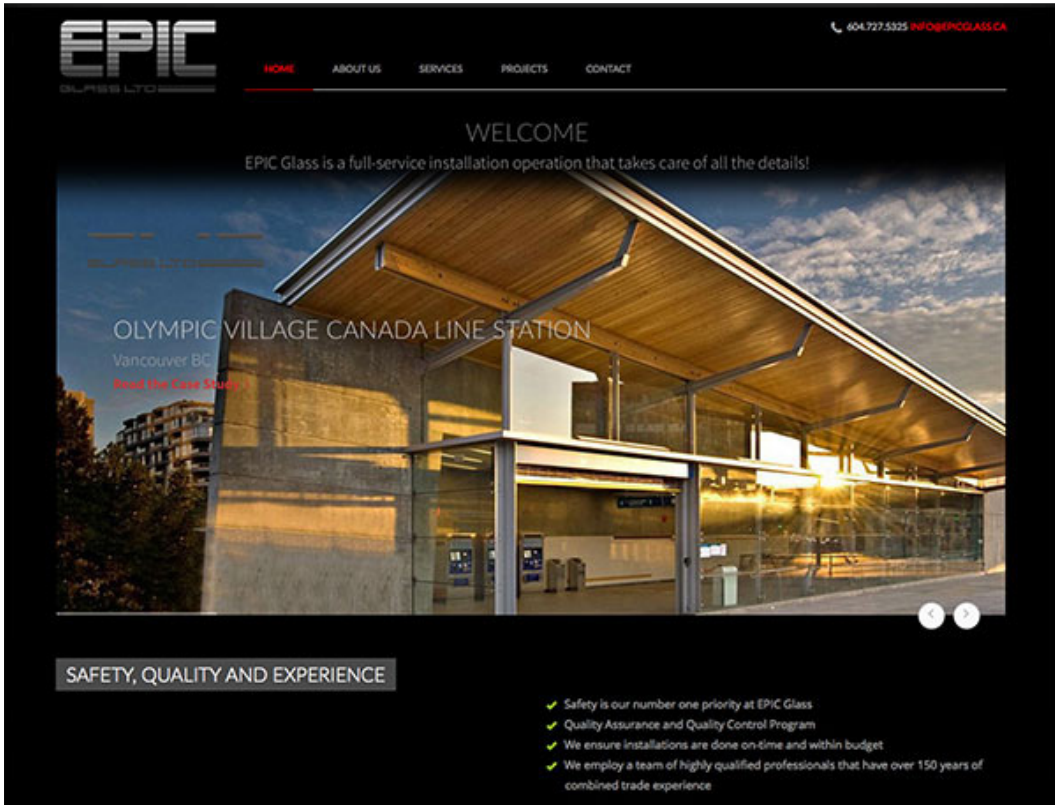


Trend Change

System	Measures	Applications	Systems & Structures
SmartCover®	Level	CIP prioritization I&I, CSO monitoring Data-driven Maintenance SSO and CSO monitoring	Collection System Lift Stations Storm Water Systems Canal Systems Reservoirs Water Tanks
SmartFLOE™	Flow estimation	CIP Prioritization I&I CSO monitoring	Collection system Storm Water Systems Canal Systems
SmartRain™	Rain rate and volume	CIP Prioritization I&I CSO Monitoring	Collection System Storm Water Systems Canal Systems
SmartTide™	Tidal data	CIP Prioritization I&I	Collection System Storm Water Systems Canal Systems
SmartTrend®	Change of level or flow	I&I Data-Driven Maintenance CSO patterns	Collection System Storm Water Systems Canal Systems

Contact SmartCover® Systems™ today and learn how Smart Infrastructure can provide better planning and management of your assets along with corresponding capital and operational savings.



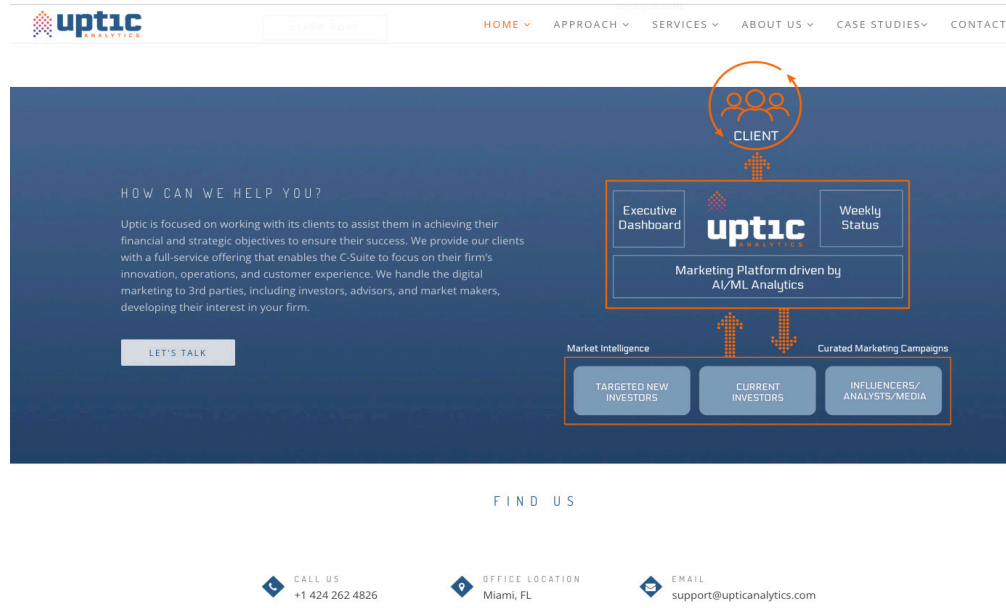
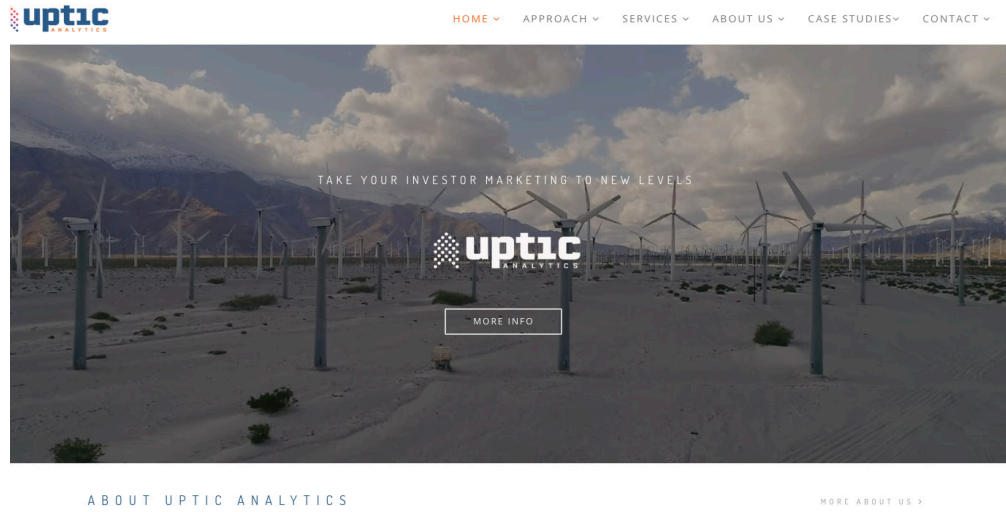


EPIC GLASS

Photography, Website, Presentation Design and Video (see below)

UPTIC ANALYTICS

Video, Website and Presentation Deck





ABOUT THE COMPANY

BKS has been in the structured cabling business since 1991. Bryan Sakata, BKS Cablecom Systems' owner, entered the industry as a small cabling contractor in Vancouver where he focused his energy on becoming the best cabling contractor in the city.

In 1995, BKS became one of the first Netconnect Design and Installer (ND&I) contractors for Commscope/Systemax/Uniprise in British Columbia. This enabled BKS to offer a 25 year manufacturer's warranty on all Commscope/Systemax/Uniprise installations. Today, similar warranties are available for BELDEN and ORTRONICS installations.

- BKS partners with industry leaders, such as Commscope/Systemax/Uniprise, Belden, Berk-Tek, and Ortronics providing our customers with superior products and premium extended warranties.

- We offer complimentary on-site consultations and estimates with professional project managers

- Detailed quotations are provided promptly and there are no surprises when the job is completed.

- Our dedication to ongoing employee training guarantees that installations are completed correctly every time.

Our Team

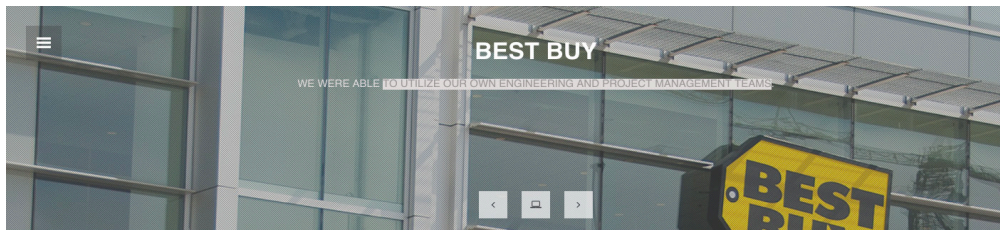
Working with some of the best people in the industry, BKS brings forth a wealth of experience and knowledge to assist with projects both large and small.

The BKS team provides our customers with a dedicated group effort. Our goal is to exceed expectations for every project.

BKS has always provided training to its employees by keeping them informed of the latest technological advances as well as network cabling methodology. Our installation team has been put through Commscope/Systemax/Uniprise, Belden and Ortronics training courses and this enables us to offer warranties backed by each of those manufacturers.

BKS

Photography, Website and Presentation Deck



CASE STUDY - BEST BUY Overview

Best Buy is Canada's fastest-growing specialty retailer and e-tailer of consumer electronics, personal computers, and entertainment software. In 2001, Best Buy bought Future Shop, and the first Best Buy Canada stores were opened in the fall of 2002, with eight locations in the Greater Toronto Area. Over the next several years, Best Buy Canada expanded west, opening more stores in Ontario and entering new markets in Manitoba, Saskatchewan, Alberta and British Columbia. Best Buy converted several Future Shop stores under the Best Buy brand and retired the remaining Future Shop stores in 2015 due to the proximity of existing Best Buy stores. Best Buy continues to expand in Canada with over 130 Best Buy stores and over 50 Best Buy Mobile stand-alone stores.

Project Scope And Goals

BKS provides ongoing cabling solutions within the different departments of Best Buy such as construction, IT, telecom and interactive with new store installations, renovations and service calls. Like many expanding companies, time, budgets and deadlines are a

CORPORATE VIDEO

Video Production, Graphics, Art Direction, Drone and Editing (click on play button)



LinearIND - Corporate Video



DNA - Corporate Video



DNA - Industrial Video



Epic Glass - Stantec Building





BIO

Cameron has managed all aspects of media design and utilization, including content development, promotional strategies, budgetary considerations, and deadline adherence across all channels, including print, online, video and interactive media. Provides guidance and leadership with respect to marketing & social media campaign strategy development, bench-marking, implementation, post-execution analysis, theme development, and budget considerations. He helps clients, through guidance and market analysis, achieve better results and understanding of innovative market solutions and trends. Streamlined processes lead to deeper and stronger collaboration with partners and clients.

www.cameronpashak.com

Photography, Video, Marketing, and Art Direction

Vancouver | Los Angeles

818-800-4352

Cameron Pashak